

## Abbot Road, Ivybridge

Guide Price £280,000

🛏️ 3 🚿 1 🚗 1

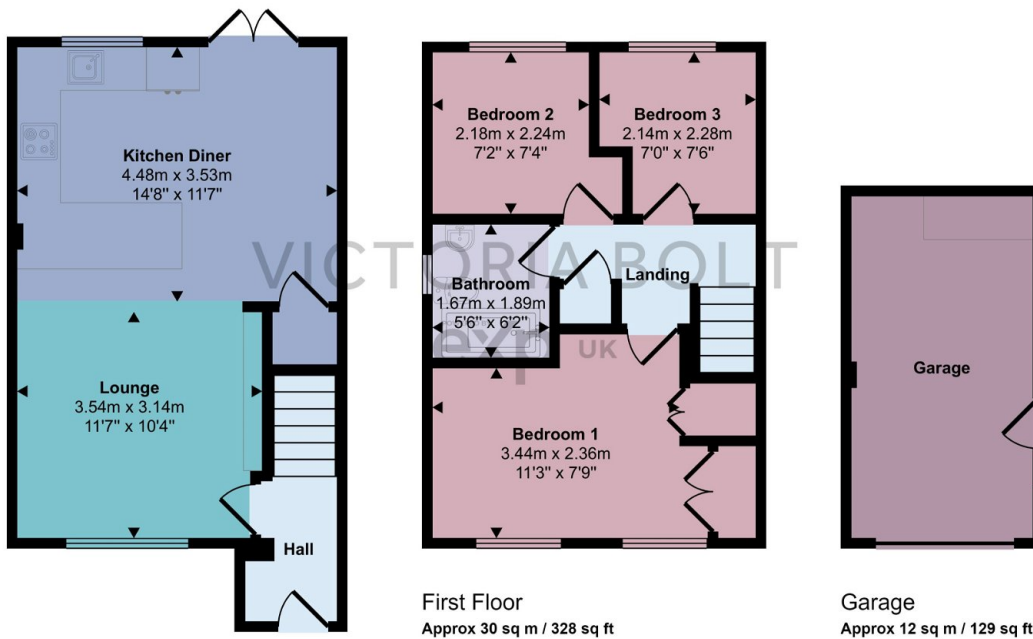


This well presented three bedroom end of terrace house is situated on Abbot Road, Ivybridge. The accommodation downstairs is open plan with a bespoke kitchen, a dining, and a lounge area. Upstairs there are three bedrooms and a family bathroom. The property is situated on a corner plot so benefits from a good size Southerly facing garden, a garage and a driveway. To arrange a viewing, please quote VB0375.

## Key Features

- 
- 
- 
- 
- 

Approx Gross Internal Area  
74 sq m / 801 sq ft



Ground Floor  
Approx 32 sq m / 344 sq ft

This floorplan is only for illustrative purposes and is not to scale. Measurements of rooms, doors, windows, and any items are approximate and no responsibility is taken for any error, omission or mis-statement. Icons of items such as bathroom suites are representations only and may not look like the real items. Made with Made Snappy 360.